



Postroom Security

Mailroom X-Ray scanning
cabinets and conveyors



Mail threats

The threat from suspect devices is not exclusive to one industry or sector. A threat in the post can come in many different forms and it is important to have the facility to identify any possible threats aimed at your staff or organisation.

These cleverly concealed threats could be an explosive combining a power source and a trigger, a powder or even a hoax, but if delivered and any of these items are opened; they all have devastating consequences. As an example, a powder threat can easily be delivered as the material is light and is very often hard to detect. A hoax, if not handled correctly can also disrupt the running of your business; resulting in a loss of revenue through evacuation of your premises or damage to corporate image.

A Mailroom X-Ray Screening cabinet or conveyor will protect your staff and premises by detecting:

- explosives (IEDs)
- chemical and biological threats
- weapons
- drugs
- malicious mail.



What we do

Before we speak about putting any equipment or procedure in place we arrange a visit from a trained Threat Assessment Manager who will produce a confidential report detailing what areas of your post room and incoming mail process are vulnerable.

Once the report has been produced we will then provide details of equipment that is best suited for your requirements.

Our range of equipment includes cabinet scanners which easily fit into any space, up to larger conveyor scanners for higher volumes of incoming mail items. This means that we will offer you the best and most suitable equipment for your requirements.

It is important to get the right equipment but it is just as important to ensure that the people who operate the equipment are fully trained to spot a threat.

Effective training makes a real difference and all of our courses are led by experienced security experts. We provide training upon installation of the machine, and also offer Safe or Suspect training and refresher courses.

We are fully compliant with all HSE and international safety standards and can remove and dispose of existing equipment.

Health and Safety compliance

All equipment complies with applicable International Health & Safety regulations

Leakage dose at outer surface $<1.0\mu\text{Sv/h}$ as specified in Ionising Radiation Regulations 1999 (IRR1999)

Complies with European Directive 93/68/EEC

Twin circuit electro-magnetic safety interlocks to BS EN 60204-1

Path to getting a Mail Scanner

Getting any new piece of equipment and changing a process can seem complicated, but we have lots of experience in implementing X-Ray Mail Scanners to single and multiple sites and from larger organisations to smaller businesses and give you full support throughout.

We do this in 5 steps...



Mailroom threat assessment

If you are not already using any X-Ray screening equipment then our Threat Assessment is the most important part of our service to you. We carry out this assessment at your premises (and will do this for each of your sites if you have multiple offices) with the assistance of your Postroom or Security Manager.

If you are already using equipment to screen your incoming mail then a Threat Assessment will ensure that your equipment, operators and processes are ready for any threat that you may encounter.

This assessment takes around 20 minutes to complete and will leave you with a confidential report which details the areas of your incoming mail process that are exposed. This will also highlight and inform you of best practices for handling suspect items.

Our Threat Assessment Managers are fully trained and will then guide you through our range of equipment so you can make an informed choice based on your requirements and volumes of post (including parcels from couriers), where the equipment will be located and who need to use it.

To arrange a Threat Assessment please contact us by phone on 01322 288890.



MR10 and MR15 Cabinet Mail Scanners



MR15 mid-size cabinet
X-Ray Scanner



MR10 compact cabinet
X-Ray Scanner

Product Specification

- Full colour TFT Monitor 19" LCD
- Enhanced Powder Detection (EPD)
- High and medium Density Alert
- 3mm Steel penetration
- 36AWG Wire resolution.

General dimensions	MR10	MR15
Cabinet		
Height	1020 mm	1504 mm
Width	430 mm	455 mm
Depth	488 mm	670 mm
Inspection chamber		
Height	345 mm	540 mm
Width	423 mm	448 mm
Depth	410 mm	586 mm
Image area		
Width	387 mm	409 mm
Depth	272 mm	547 mm
Door opening		
Height	340 mm	535 mm
Width	343 mm	370 mm

Designed with a compact footprint for your business when space is at a premium and for smaller quantities of incoming mail, packages and bags. The MR10 and MR15 are a cost effective way to protect your staff, premises and ensure minimal disruption to your business.

Due to their compact size cabinet scanners can be used in all areas including mailrooms, reception areas, goods in and contraband detection.

Although smaller, these cabinet X-Ray scanners will still produce high resolution images letting you see instantly on the screen what is in any item of post you receive. The enhancement tools built into our cabinet scanners allow you to capture an image and then further investigate using negative images and EPD.



EPD™ Enhanced Powder Detection

Heightened ability to identify threats conveyed via powder based elements.

User metrics

Management of operators ensuring safe, correct and effective processing along with training CD to optimise scanner use and heighten threat awareness.

Automatic Image archiving

Cross referencing and accelerated referral to security personnel.

Print/Export images

A hard copy library can be created for reference or to aid image share.

One Touch Email Function

Enables escalation process to be shared across departments.

Negative Image Function

Identity of high density materials. E.g. metal, shown up white against a black background.

"One Touch" to energise X-Ray generation

Simple 3 second quick operation maximises through-put of mail.

MR40 Cabinet Mail Scanner

Product Specification

- Full colour TFT Monitor 19" LCD
- Enhanced Powder Detection (EPD)
- 36AWG wire resolution
- 3mm Steel penetration
- High, medium and 3 point Density Alert.

MR40 Large cabinet
X-Ray Scanner



General dimensions	MR40
Cabinet	
Height	1804 mm
Width	576 mm
Depth	589 mm
Inspection chamber	
Height	632 mm
Width	569 mm
Depth	509 mm
Image area	
Width	480 mm
Depth	480 mm
Door opening	
Height	626 mm
Width	487 mm



The MR40 provides one of the largest scanning cabinets available but has a footprint of just 0.3 square meters so it will easily fit into a space too small for a conveyor scanner. The user interface is very easy to use and this combined with our operator training when the equipment is installed, will ensure that you are alerted to any suspect items you may encounter.

The built-in software and networking allows you to quickly investigate possible threats including Enhanced Powder Detection and capture an image. This image can be saved for use in future training or emailed directly to another member of your team as part of your escalation process.



EPD™ Enhanced Powder Detection

Heightened ability to identify threats conveyed via powder based elements.

Print/Export images

A hard copy library can be created for reference or to aid image share.

One Touch Email Function

Enables escalation process to be shared across departments.

Negative Image Function

Identity of high density materials. E.g. metal, shown up white against a black background.

Operator icon toolbar

Quick selection of tools to verify if an object is Safe or Suspect.

User admin log in

Record of scanner use ensures operation is undertaken only by designated operators.

User metrics

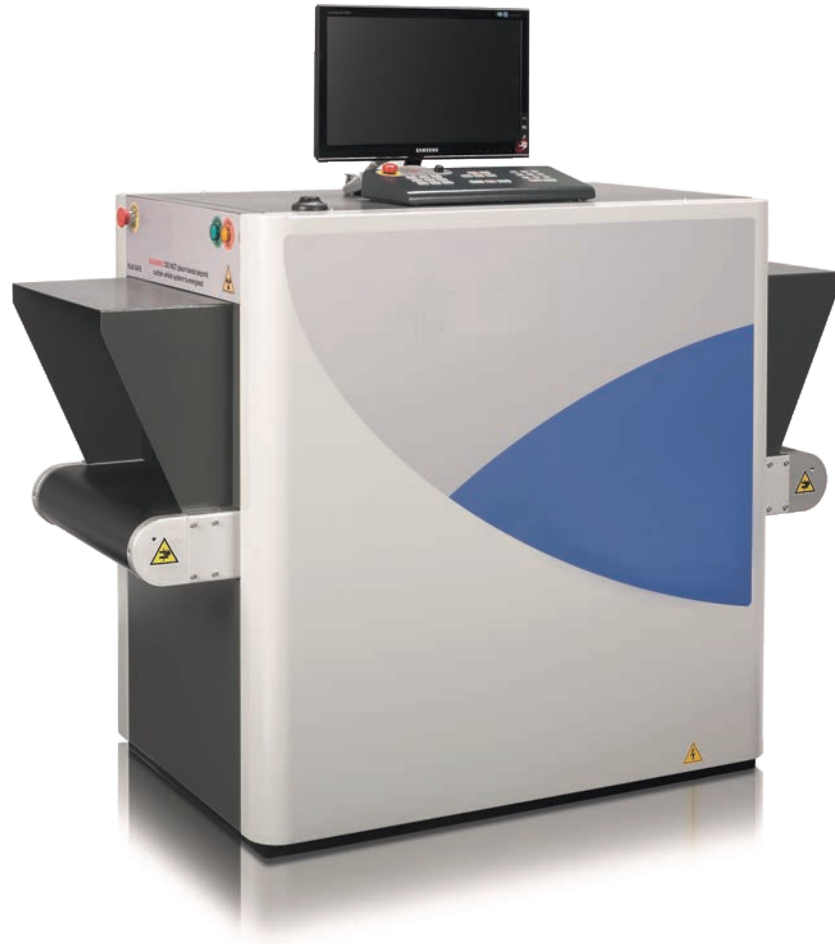
Management of operators ensuring safe, correct and effective processing along with training CD to optimise scanner use and heighten threat awareness.

MR50 Conveyor Mail Scanner

Product Specification

- Full colour TFT Monitor 22" LCD
- Enhanced Powder Detection (EPD)
- 41AWG wire resolution
- 32mm Steel penetration
- Density Alarm
- Variable edge enhancement.

General dimensions	MR50
Height	1212 mm
Width	770 mm
Length	1524 mm
Inspection tunnel	
Height	360 mm
Width	506 mm
Max bag weight	165 kg
Belt speed	0.2 m/s
Noise level	<60dB(A)



The MR50 dual energy X-Ray Conveyor Scanner offers you a smaller unit with no compromise in detection capability. The MR50 will allow for parcels and baggage up to 50 cm x 35 cm.

The 22" LED monitor and multi-function keyboard gives you the ability to zoom in colour up to 64x, edge enhance, manage images of previously scanned items and also start and stop the conveyor.

With 250GB of storage you can capture and record scanning session information by date and by user, so that you can recall previously scanned images and then forward TIF or JPEG via email or USB flash drive.

Enhanced detection management tools such as energy stripping can be utilised to screen for organic, inorganic and metallic composition.

Density alarm

When an item containing materials at the set density are scanned an alarm is raised and the density is coloured accordingly.

Organic/inorganic material discrimination

Users can select to highlight the presence of material within a specific group, such as Metallic.

Variable edge enhancement

This auto-focus enables the outline of items such as wires and components.



EPD™ Enhanced Powder Detection

Heightened ability to identify threats conveyed via powder based elements.

Pseudo colour

This function assigns colour to different scales to increase contrast.

Continuous Zoom

Images can be rotated 360° to view suspected materials in another profile and zoom into specific areas.

MR70 High capacity Conveyor Mail Scanner

Product Specification

- 2 x full colour TFT Monitor 22" LCD
- Enhanced Powder Detection (EPD)
- 41AWG wire resolution
- 32mm Steel penetration
- Density Alarm
- Variable edge enhancement.

General dimensions **MR70**

Height	1255 mm
Width	905 mm
Length	2280 mm

Inspection tunnel

Height	405 mm
Width	606 mm
Max bag weight	165 kg
Belt speed	0.2 m/s

Noise level	<60dB(A)
-------------	----------



The MR70 is a high capacity X-Ray Conveyor Scanner with a tunnel allowing for parcels and bags up to 60 cm wide with no limit in length of your item.

Made for high volumes of throughput, equipped with 2 x 22" LED monitors and multi-function keyboard, you will find this equipment extremely powerful yet easy to use.

Using the keyboards built-in joystick the equipment operators can zoom in on an item at up to 64x, rotate it 360°, then use the variable edge enhancement to focus on wires and other components.

As part of your own threat escalation process you can email an image to another colleague or alternatively compare this image with a previously screened item that has been archived and stored on the MR70's hard drive.

Density alarm

When an item containing materials at the set density are scanned an alarm is raised and the density is coloured accordingly.

Organic/inorganic material discrimination

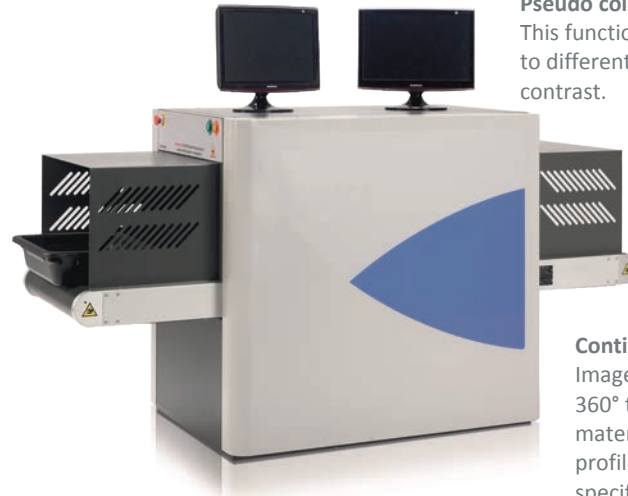
Users can select to highlight the presence or material within a specific group, such as Metallic.

Variable edge enhancement

This auto-focus enables the outline of items such as wires and components.

Pseudo colour

This function assigns colour to different scales to increase contrast.



Continuous zoom

Images can be rotated 360° to view suspected materials in another profile and zoom into specific areas.

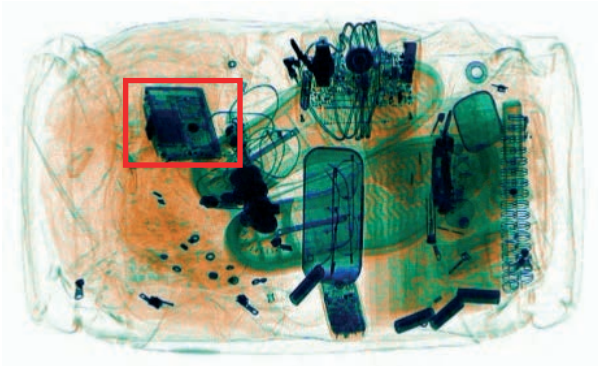
EPD™ Enhanced Powder Detection

Heightened ability to identify threats conveyed via powder based elements.

ADS (Advanced Detection System)

When added to your X-Ray scanning unit, ADS software enhances your threat detection capability. Advanced algorithms highlight suspect items using the density and atomic number of explosives, drugs or cash and highlight these on your monitor in colour and creates an alert.

ADS software is invaluable for busy mailrooms and higher quantities of mail as the equipment operators are given a much higher and enhanced detection system.



TIP (Threat Image Projection)

TIP software is a virtual image management tool, and is the preferred training method of regulatory agencies worldwide. It helps you to ensure that the equipment operators are fully using their training, enhancing their skills and using the scanners' full potential.

The software runs in the background and creates a fictional threat, projecting this image randomly into everyday scanning for the operators to discover and investigate. Hit and miss reports can be run by a manager remotely or when logging off the system.



Training

The most effective way of securing your premises from postal threats is to ensure that any staff who use X-Ray Screening equipment are trained and that their training is up to date. The operators and security staff who attend our courses will gain a clear understanding of how to determine if an item is "Safe or Suspect". They will know what actions and protocols are needed so that the suspect item is dealt with effectively, with minimum impact on your business.

Using TIP (Threat Image Projection) software you will also be able to monitor and review how your staff react to a threat by projecting an image of a threat into an item that is being screened.

Maintenance

Using any X-Ray equipment within an organisation means compliance with the Ionising Radiation Regulations 1999 (IRR99). Annual checks are a legal requirement but also ensure the continued performance and running of your equipment. We offer mandatory cover that provides planned service calls to carry out safety checks and provide the required certificates.

Our fully comprehensive cover includes certification, safety checks and all parts, labour and call-outs if you do experience a fault. This also includes a place at one of our Safe or Suspect training courses and refresher training during planned service visits at no extra cost.



Franking machines
Folding and inserting
Envelopes
Letter openers
Address printers
Shredders
Print solutions
Telecoms
Hybrid mail

Mailroom Security - A My Mailing Room Company
3 North Star Boulevard
Greenhithe
Kent DA9 9UG
Tel: +44(0)1322 288890
Email: enquiries@mailroom-security.com

